

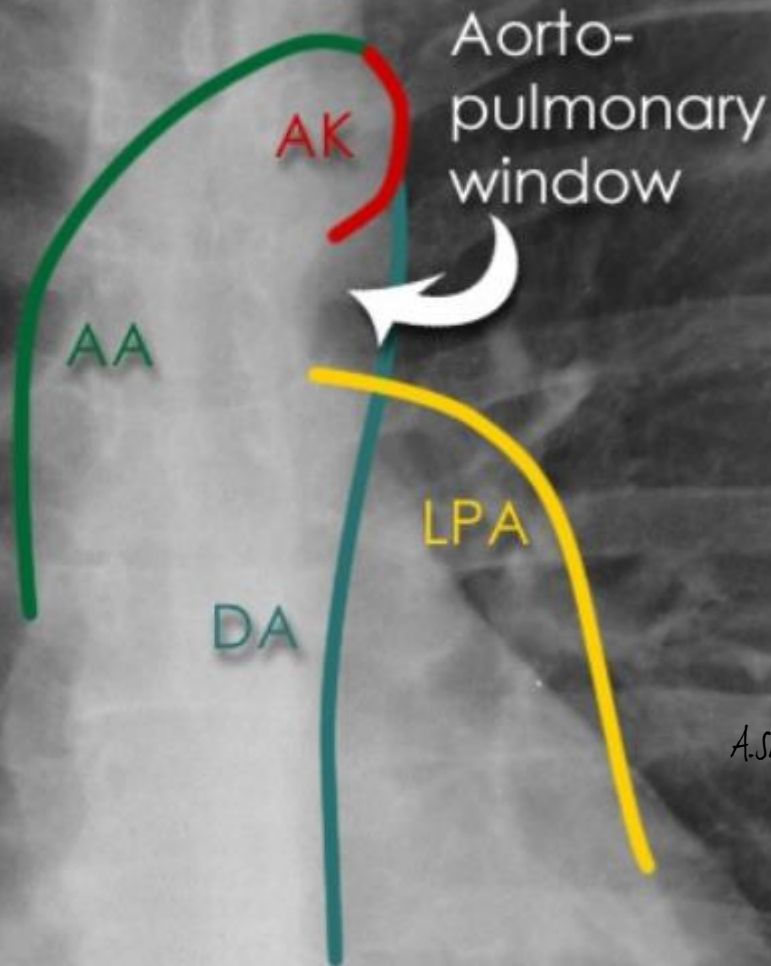
The aortic knuckle (**red line**)

- the 'aortic knuckle'

The contour of the descending thoracic aorta (**yellow line**)

A.sh

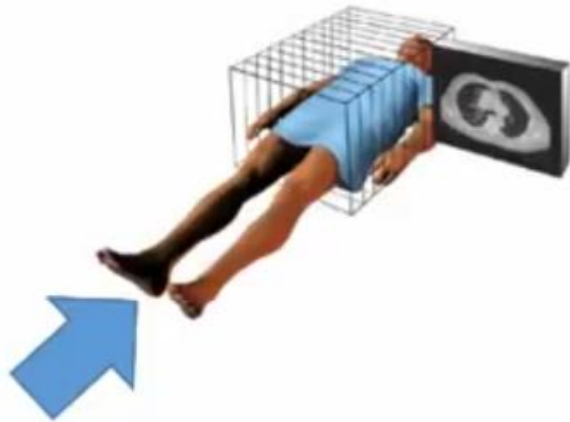
## the aortic window



- The arch may also be visible in left anterior oblique views enclosing a pale space,
- **‘the aortic window’**,
- in which shadows of the pulmonary trunk and its left branch may be discerned

The aorto-pulmonary window lies between the arch of the aorta and the pulmonary arteries. This is a potential space in the mediastinum where abnormal enlargement of lymph nodes can be seen on a chest X-ray.

Aortic Knuckle **AK**  
Left Pulmonary Artery (**LPA**)  
Ascending Aorta=AA  
DA atroA gnidnecseD =

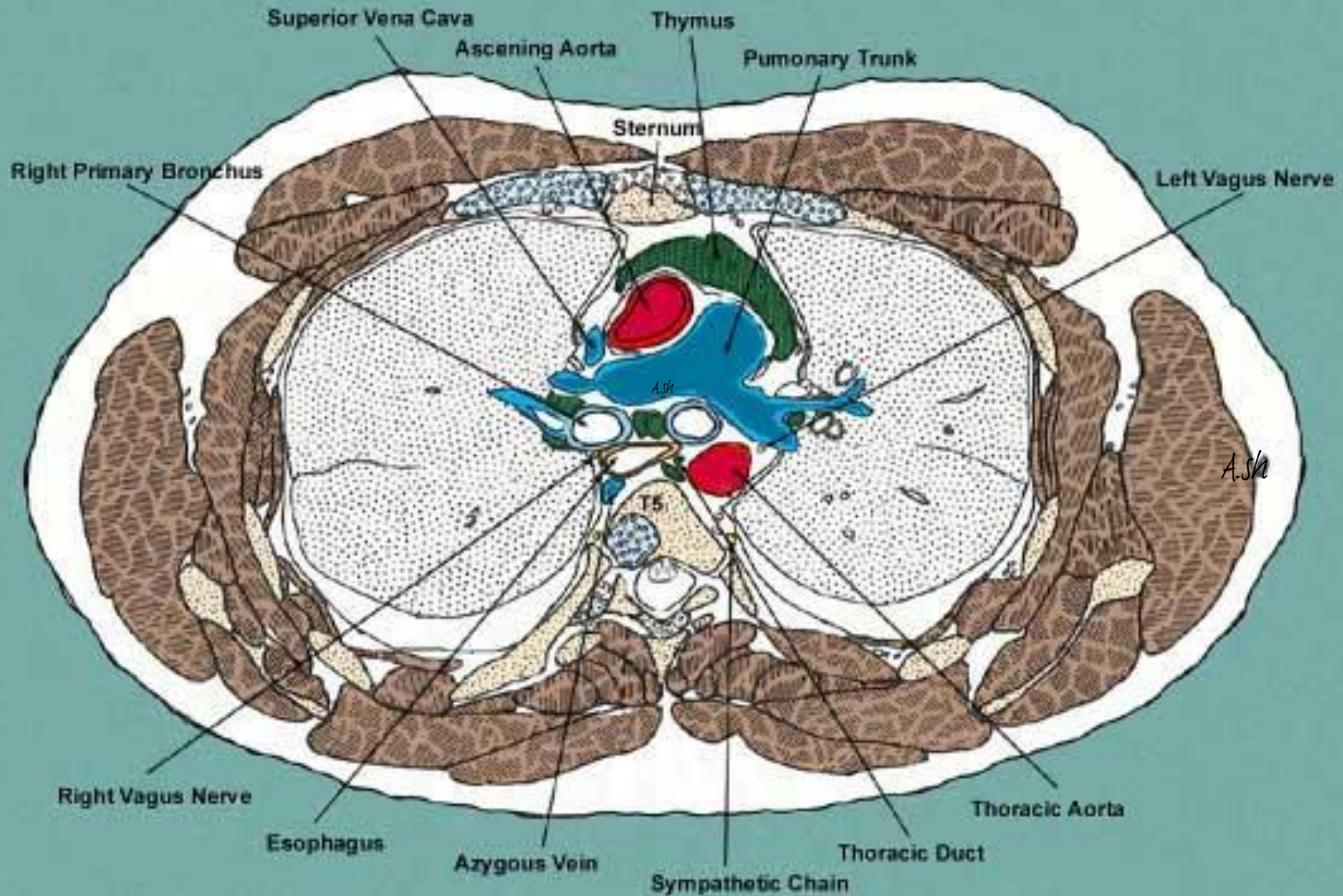


ON the CT scans



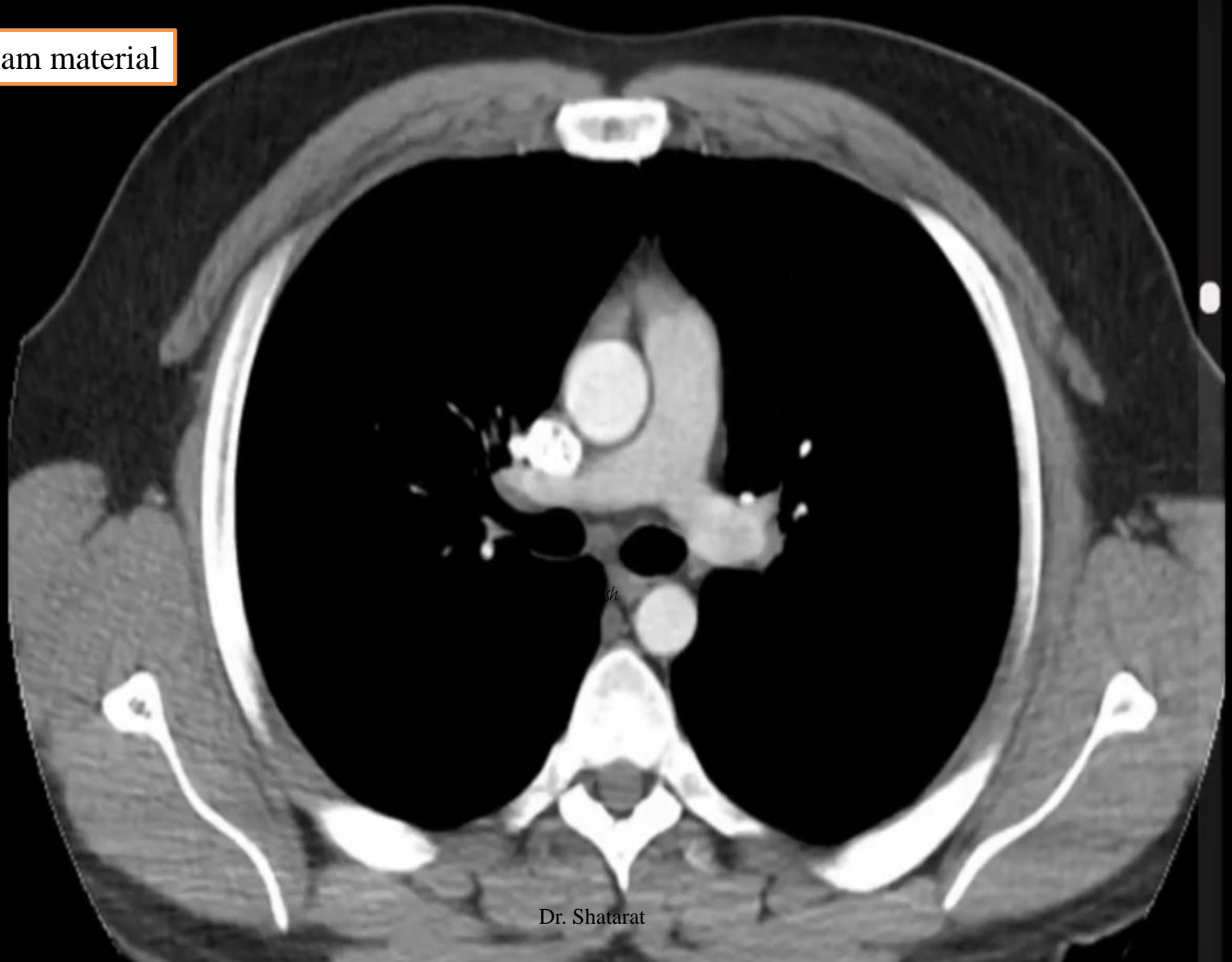
You should appreciate the fact that we are evaluating the inferior part of the section (not the superior), therefore, it should be noted right side will be actually on the left side on the scan and vice versa.





Cross section through the thorax at vertebra T5. This section cuts through the anterior, middle and posterior mediastina. You now see the ascending and descending aortae as well as the pulmonary trunk

Exam material



Dr. Shatarat



sh





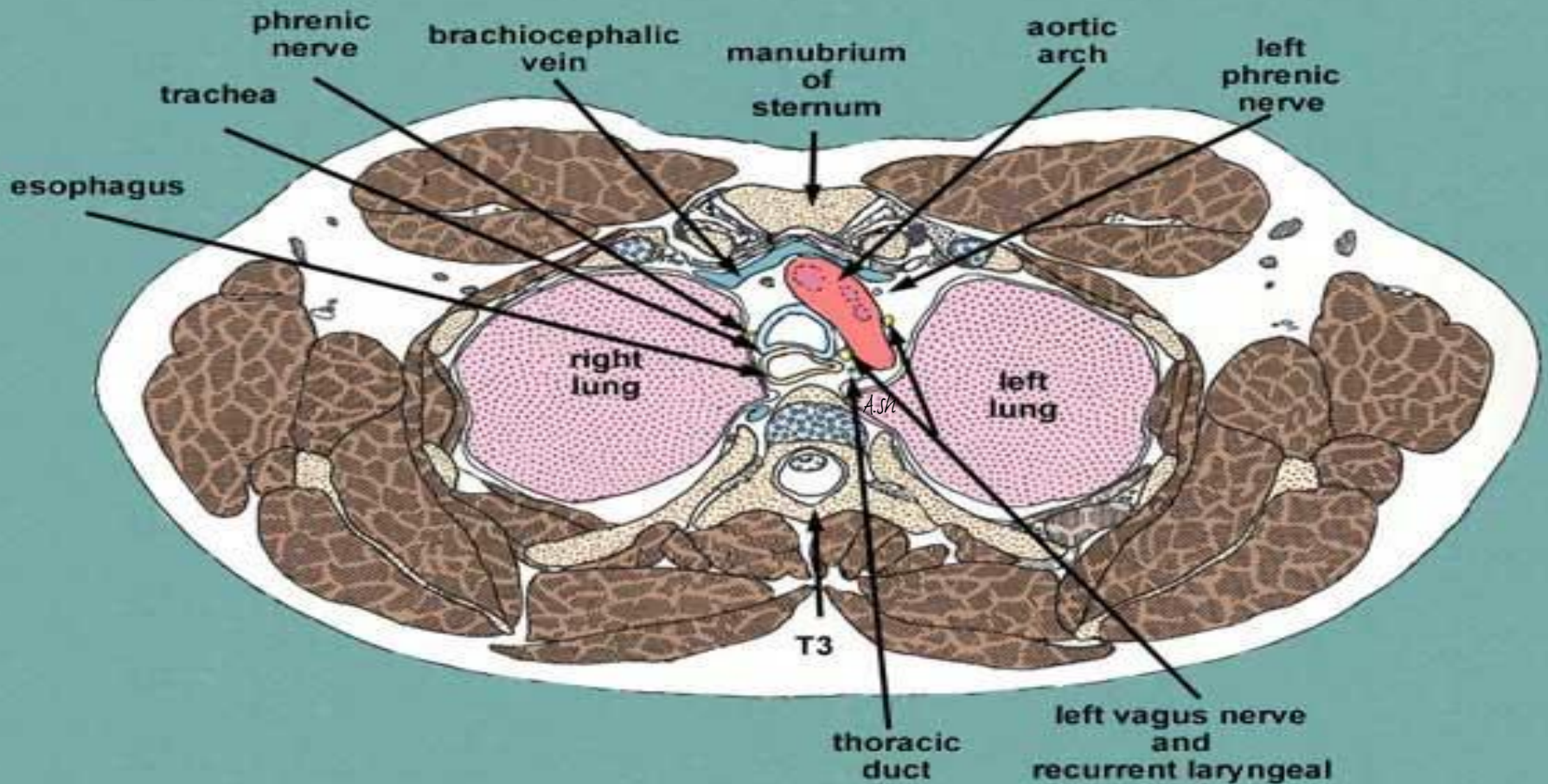
A.Sh



Ash

Dr. Shatarat

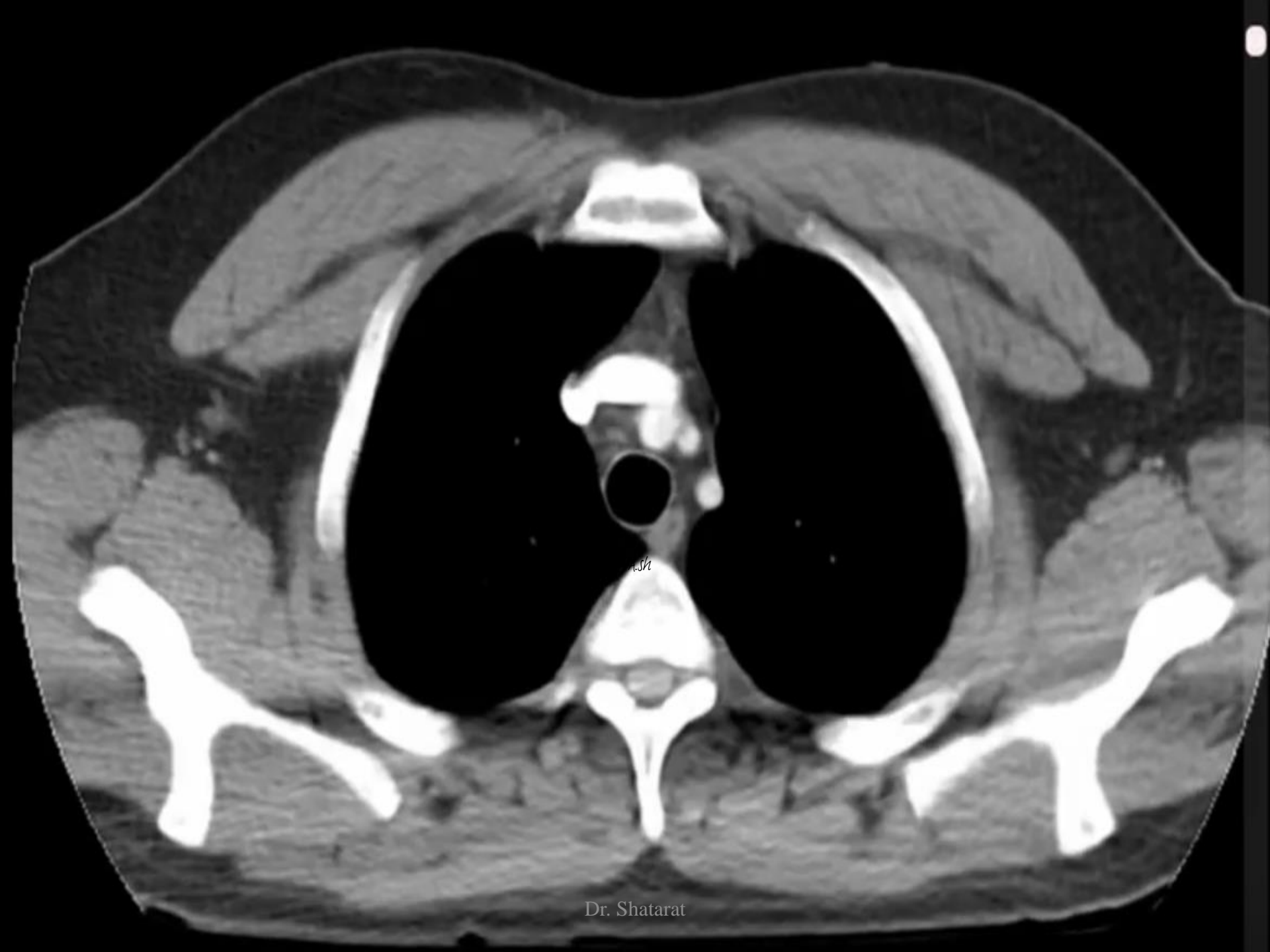




Cross section through the thorax at vertebra T3. This section is also through the superior mediastinum but a little lower than the one above. You are looking up and into the aortic arch. Although not labeled, you should be able to make out the openings of the brachiocephalic, left common carotid and left subclavian arteries.



A. sh



1.5/2



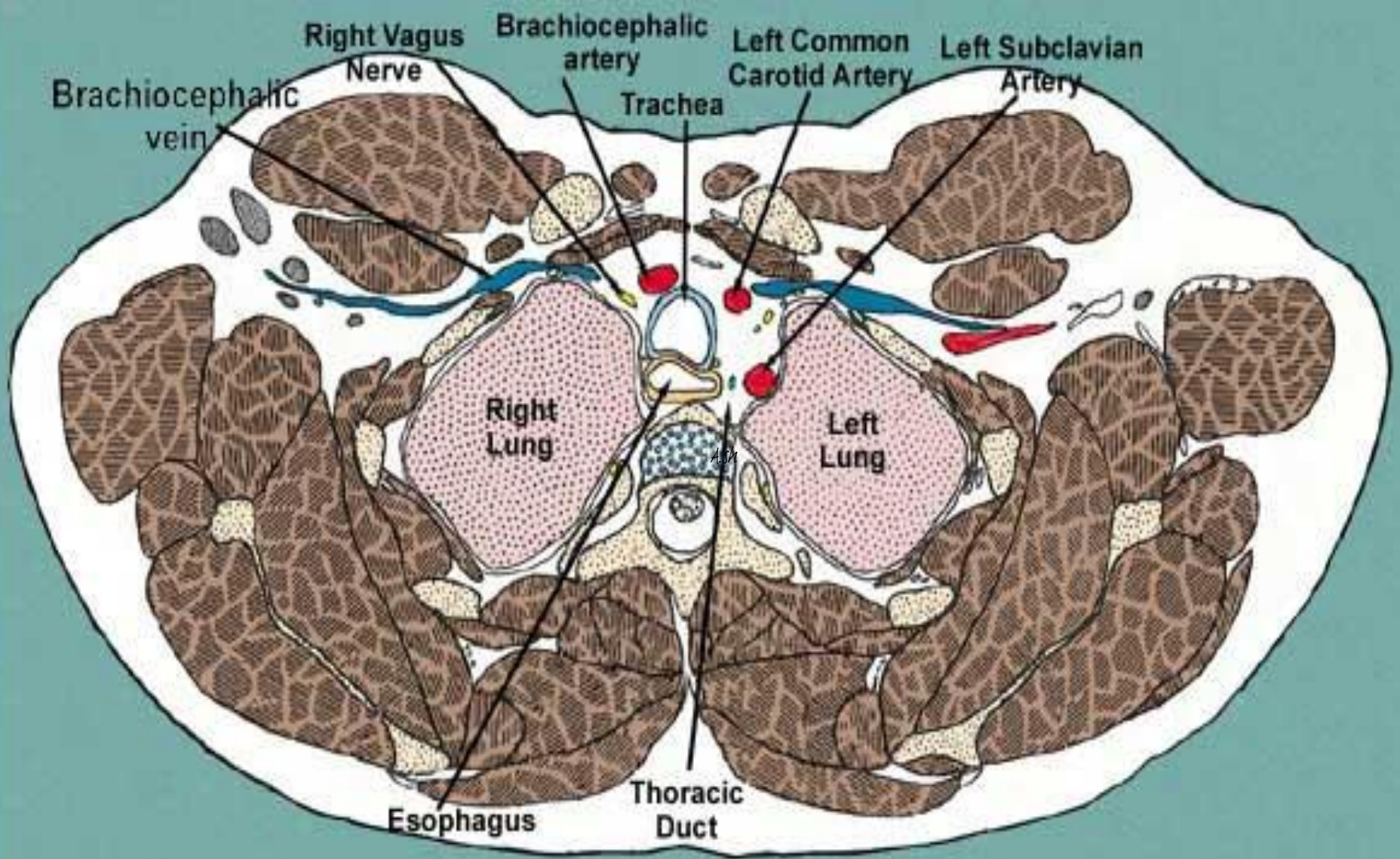


Dr. Shatarat





Dr. Shatarat



Cross section through the thorax at vertebra **T2** This section cuts through the superior mediastinum above the aortic arch



Dr. Shatarat



Now we are at neck





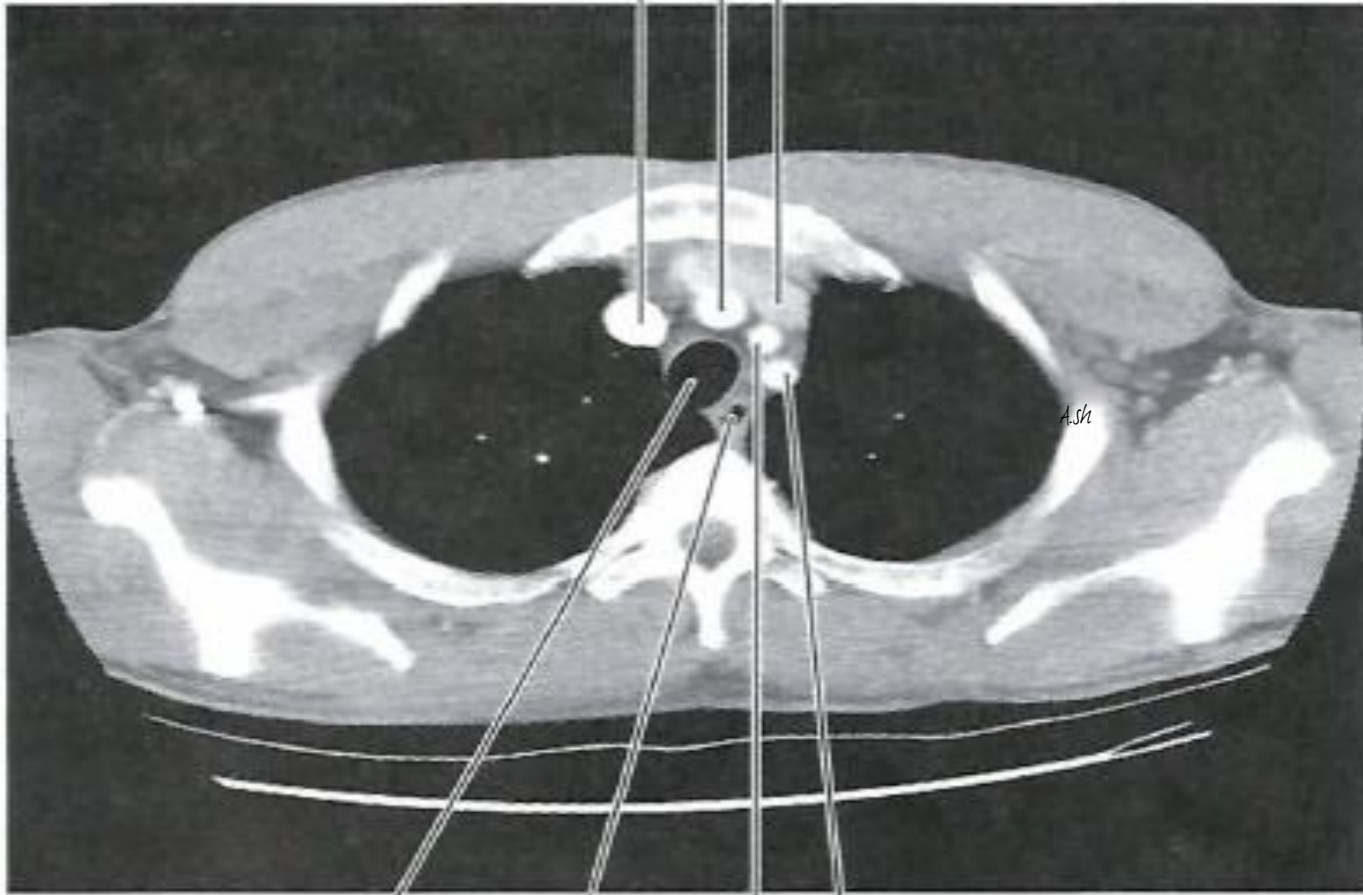
T2 LEVEL

Brachiocephalic trunk

Right brachiocephalic vein

Left brachiocephalic vein

From the IMC, © 2010 DXR Development Group, Inc.  
All rights reserved.



Trachea

Esophagus

Left subclavian artery

Left common carotid artery

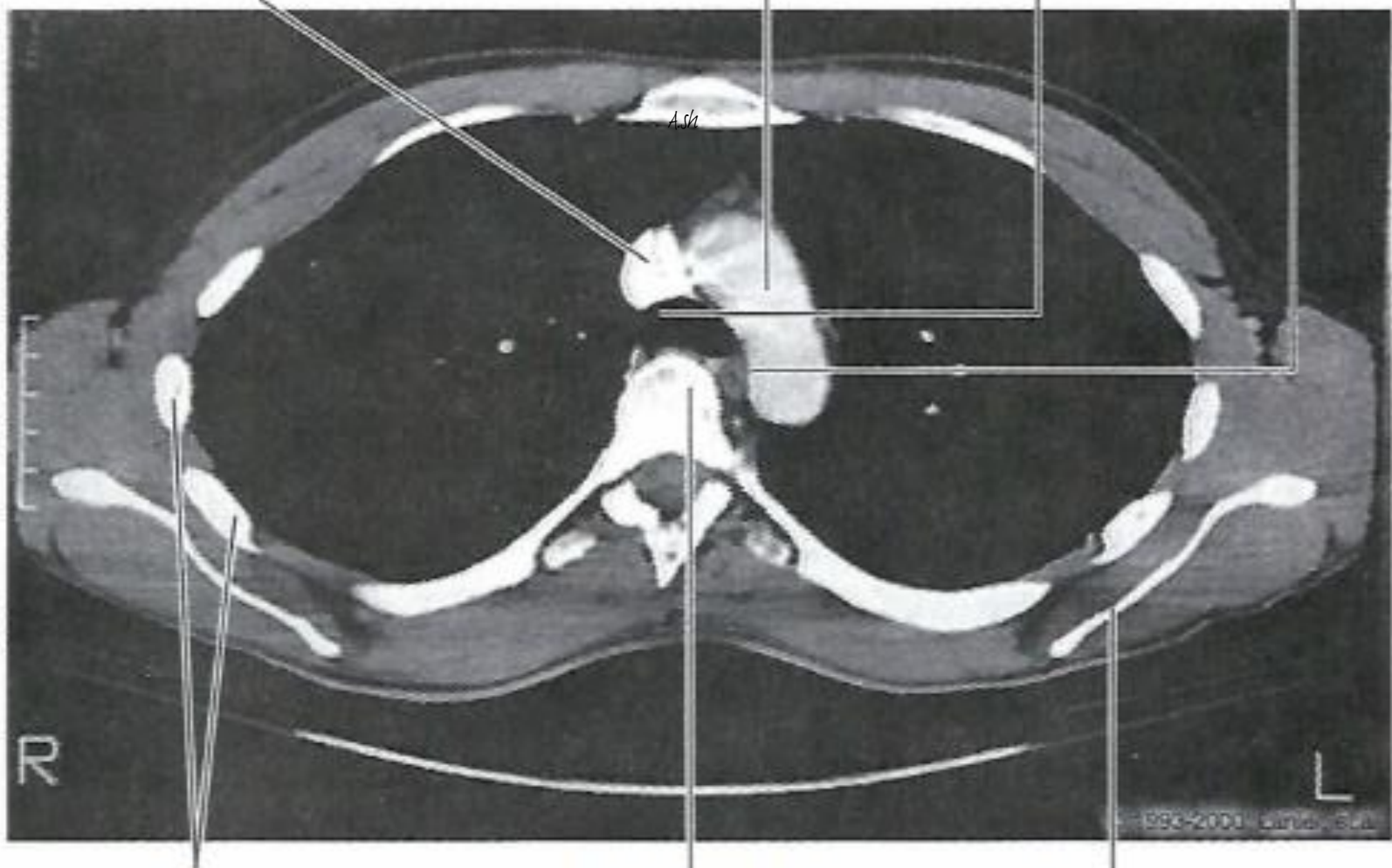
Exam material

Figure III-2-39. Chest: CT, T2

T3 LEVEL

Superior Vena Cava      Aortic Arch      Trachea      Esophagus

From the IMC, © 2010 DXR Development Group, Inc.  
All rights reserved.



Ribs      T3 Vertebra      Scapula

Exam material

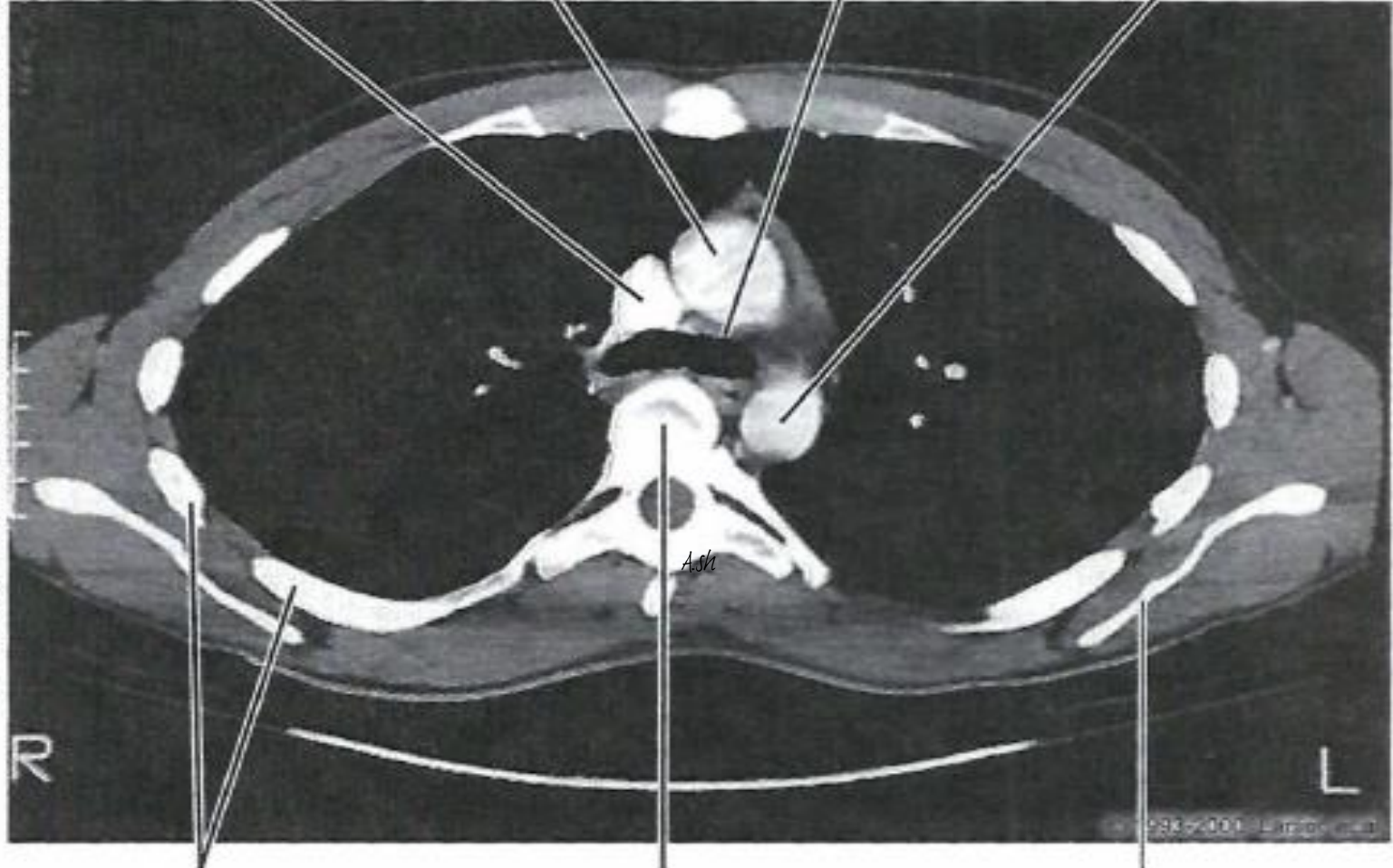
Figure III-2-40. Chest: CT, T3

Dr. Shatarat

T4 LEVEL

Superior Vena Cava      Ascending Aorta      Bifurcation of Trachea      Descending Aorta

From the IMC, © 2010 DXR Development Group, Inc. All rights reserved.



Ribs      T4 Vertebra      Scapula

Exam material

Figure III-2-41. Chest: CT, T4

Dr. Shatarat