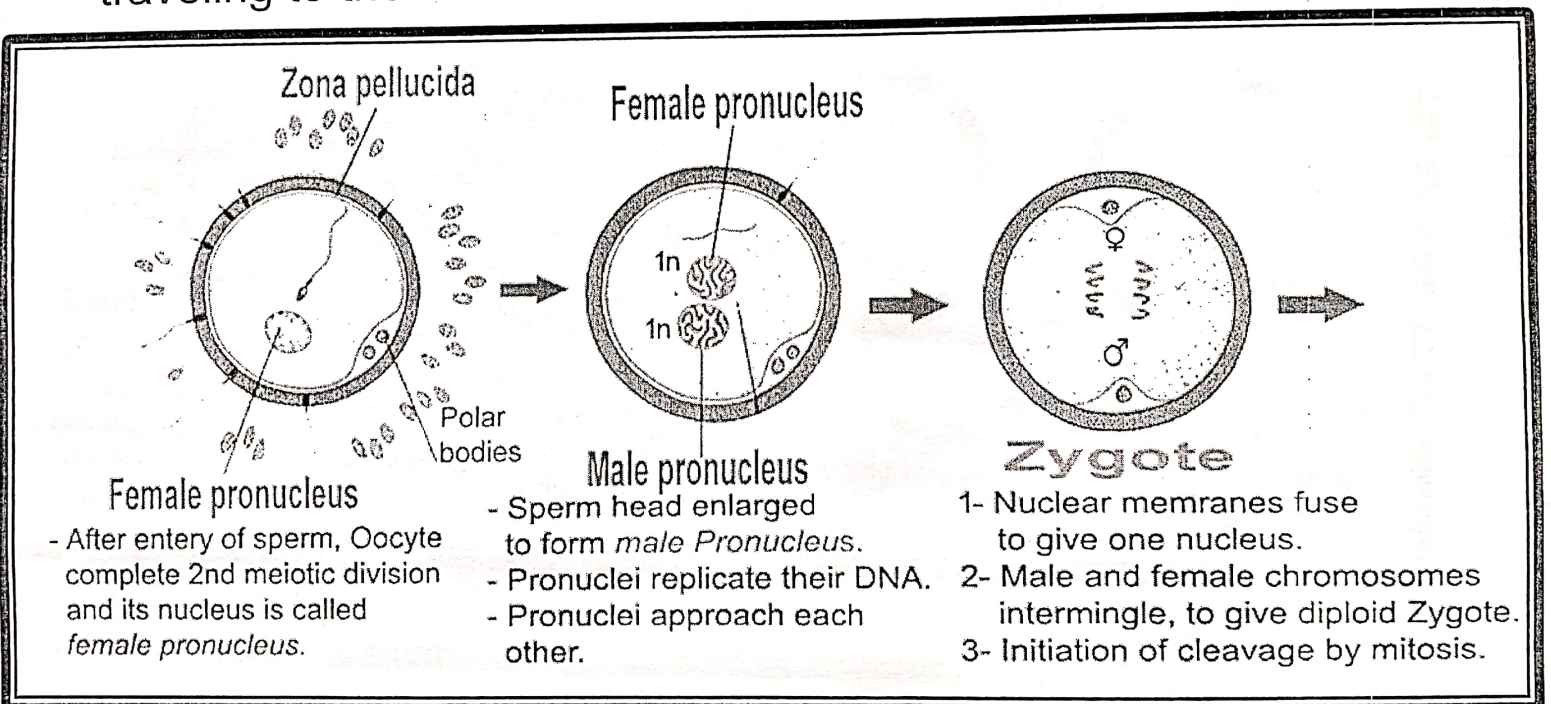


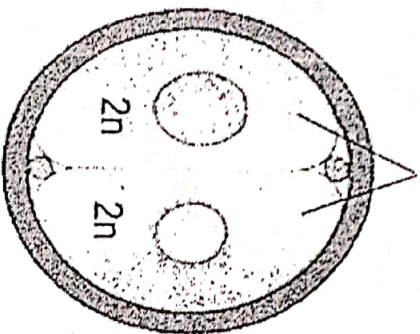
Cleavage-1

Within 24 hours after Fertilization, the zygote undergo multiple mitotic divisions that called cleavage. Cleavage subdivides the zygote into many identical cells called (blastomeres) WITHOUT increasing its size. This process occurs while the zygote traveling to the uterus.



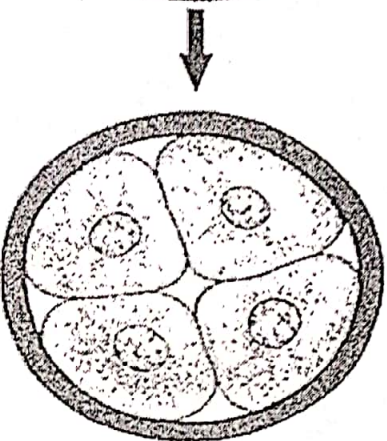
Cleavage-2

Blastomeres مَرَّة = فسييم

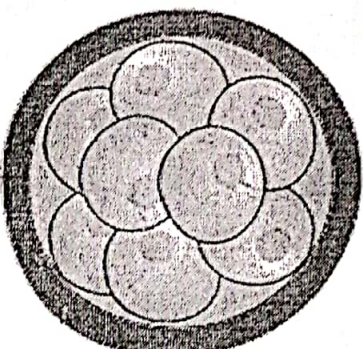


2-cell stage

- Zygote undergo rapid mitosis within its ZP to give 2 halves (2 daughter cells) each called Blastomere.

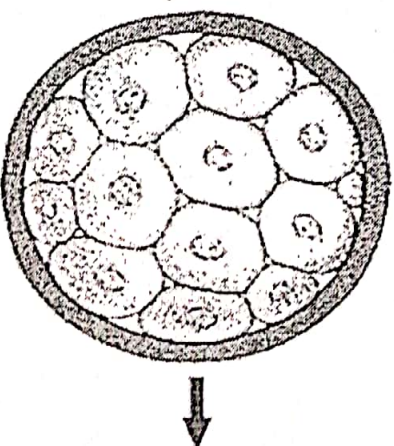


4-cell stage



8-cell stage

Cells are loosely connected with each other.



16-cell stage ~ Day 3

Tightly connected cells forms a ball of compacted identical cells called → Early Morula (mulberry) a spherical structure of identical cells.

Blastocyst formation

At Day 5, Late morula reach the uterine cavity while in secretory phase. Uterine fluids collected between morula cells and separated them into:

1. Embryoblast.
2. Trophoblast.
3. Blastocyst cavity.

Zona pellucida should disappear

To prepare blastocyst for implantation.

